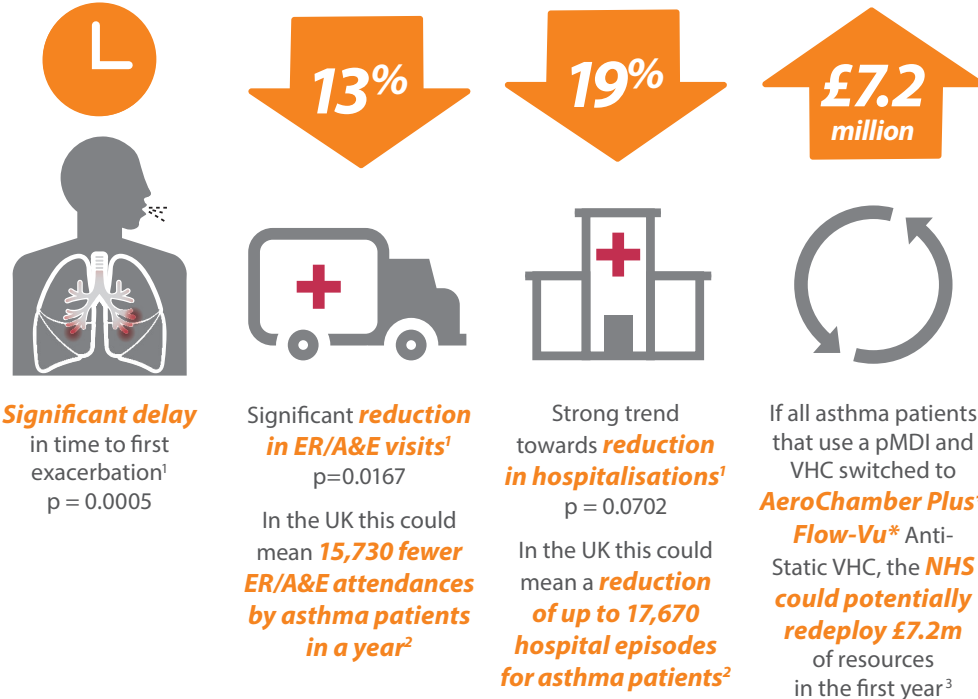
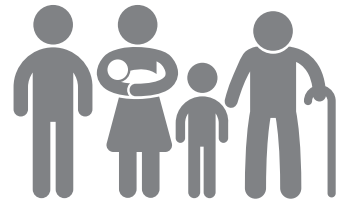


Real-world evidence shows improved asthma outcomes with **AeroChamber Plus* Flow-Vu*** Anti-Static Valved Holding Chamber

Real-world retrospective study compared use of the **AeroChamber Plus* Flow-Vu*** Anti-Static Valved Holding Chamber (VHC) to other non-antistatic VHCs for asthma control



Real-world study demographics¹



18,650 patients studied between January 2010 and August 2015

All ages (0 to over 75)
44% female 56% male

4.5% history of severe exacerbation[†]

45.3% history of moderate exacerbation[†]

Well-matched patients were placed in two groups:

Group 1: AeroChamber Plus* Flow-Vu* Anti-Static VHC

Group 2: Control, other conventional non-antistatic VHCs

Evaluation of **Flow-Vu*** Inhalation Indicator

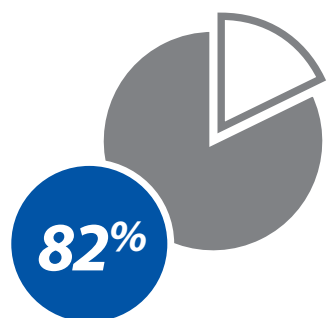
Visual feedback from the **Flow-Vu*** Inhalation Indicator led to approximately 4x increase in caregiver Quality of Life.⁴



Issues in asthma control



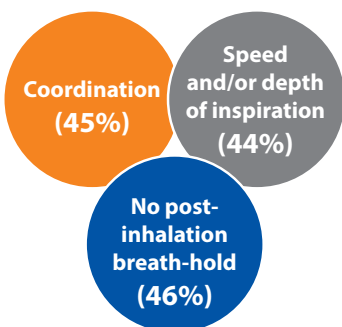
Each year in the UK asthma results in:²
121,000 A&E attendances in hospital**
93,000 Hospital in-patient episodes
1,800 ICU episodes
1,160 Asthma deaths
(90% of which are preventable)⁶



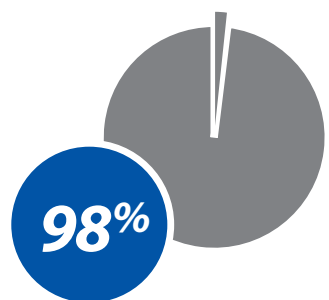
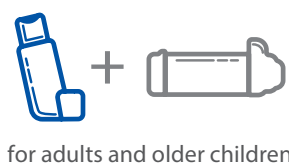
of patients treated for asthma **are not well controlled**⁵

Incorrect inhaler technique is frequent⁷

The most frequent errors are:



Guidelines recommend chambers for both children and adults⁸



of people with asthma **who use a chamber with their metered dose inhaler** are controlled or partially controlled⁹

[†] A moderate exacerbation was defined as an emergency department visit for asthma symptoms without a hospital admission; a severe exacerbation was defined as an in-patient admission for asthma.

**UK estimate based on data for Scotland and Wales; includes 'New' and 'Unplanned Return' attendances only at A&E, excludes those who are 'Recall' or 'Planned Return'.

References:

- Burudpakdee C, et al. A retrospective study of the effectiveness of the AeroChamber Plus* Flow-Vu* Antistatic Valved Holding Chamber for asthma control. *Pulmonary Therapy*. 2017; 3: 283-296 <https://link.springer.com/content/pdf/10.1007%2Fs41030-017-0047-1.pdf> Accessed January 2018
- Mukherjee M, et al. The epidemiology, healthcare and societal burden and costs of asthma in the UK and its member nations: analyses of standalone and linked national databases. *BMC Medicine* 2016;14:113.
- Trudell Medical UK Budget Impact Model (Data on file)
- Ammari W, et al. Evaluation of asthma control, parent's quality of life and preference between *AeroChamber Plus** and *AeroChamber Plus* Flow-Vu** spacers in young children with asthma. *J of Asthma*, 2015;52(3):20.
- Annual Asthma Survey 2016 report. Available from <https://www.asthma.org.uk/globalassets/get-involved/external-affairs-campaigns/publications/annual-asthma-care-survey/annualasthasurvey2016final.pdf>. Asthma UK. Accessed January 2018.
- Royal College of Physicians. Why asthma still kills: the National Review of Asthma Deaths (NRAD) confidential enquiry report. London: RCP, 2014.
- Sanchis J, et al. Systematic review of errors in inhaler use: Has patient technique improved over time? *CHEST* 2016;150:394-406.
- BTS / SIGN Asthma Guideline 2016. Available from <https://www.brit-thoracic.org.uk/document-library/clinical-information/asthma/btssign-asthma-guideline-2016/> Accessed January 2018.
- Levy ML, Hardwell A, McKnight E, Holmes J. Asthma patients' inability to use a pressurized metered-dose inhaler (pMDI) correctly correlates with poor asthma control as defined by the Global Initiative for Asthma (GINA) strategy: a retrospective analysis. *Prim Care Respir J*. 2013;22(4):406-11.

